

NK LUX



Ovaj radijator izrađen je od čeličnih šavnih cevi (Č 0146), od materijala DC01, u standardu EN 10305-3, EN 10305-5, trapezastog je profila dimenzije 50x35x25 mm, a rebra su od okruglih cevi prečnika Ø25 mm, sa radijusom krivine r 1475 mm. Kao grejni fluid koristi se topla voda, dok se predaja toplote vrši konvekcijom i zračenjem. Radijator poseduje 4 priključka dimenzije 1/2". Maksimalni pritisak pri ispitivanju je 10,14 bara (0,10 Mpa), a radni pritisak je 6 bara.

Tehničke karakteristike (visina, širina, raspon priključaka, težina, zapremina, toplotna moć - EURO NORMA 442 i dimenzije priključaka) prikazane su u tabeli. Montaža radijatora je izuzetno jednostavna i laka, ugradna dubina prilikom montaže od 65mm - 110 mm, a uputstvo o montaži, sa garantnim listom i kompletom za montažu, koga čine 3 ili 4 nosača za montažu zavisno od veličine radijatora sa pripadajućim vijcima i tiplovima, odzračna slavina 1/2", niklovan čep 1/2", nalaze su u pakovanju, kao i zaštitne plastične kape.



The NK LUX radiator is a tubular radiator that takes up very little space due to its shape and design, whose main purpose is to heat the air in bathrooms, but it can also be used in other rooms (working, living room, children's room, kitchen, but also business rooms). This radiator is made of steel seam pipes (Č 0146), of material DC01, in standard EN10305-3.

Technical characteristics (height, width, range of connections, weight, volume, thermal power - EURO NORM 442 and dimensions of connections) are shown in the table. The radiator has 4 1/2" connections. The maximum test pressure is 10.14 bar (0.10Mpa) and the working pressure is 6 bar. EN 10305-5, it has a trapezoidal profile with dimensions of 50x35x25 mm, and the ribs are made of round tubes with a diameter of Ø25 mm, with a radius of curvature r 1475 mm.



RAL 9016



RAL 9003



RAL 9005
Antracit



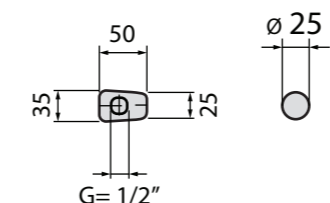
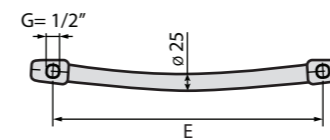
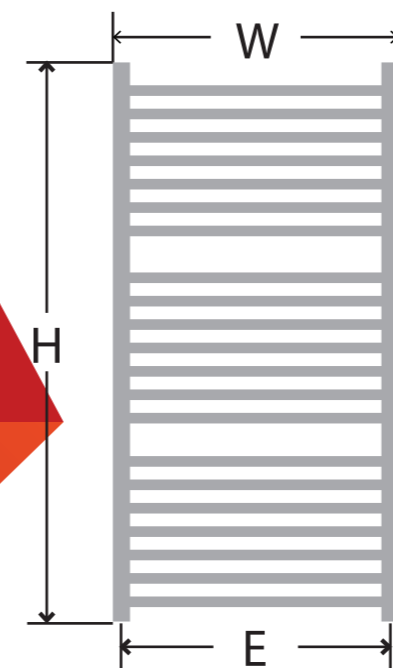
RAL 1002
Gold



RAL 9005
Metalic



RAL 9005
Half mat



Visina H (mm)	Širina W (mm)	Rastojanje priključaka E (mm)	Broj cevi Tubes number	Težina Weight (kg)	Zapremina Cubage (L)	Toplotni učinak 90/70/20°C ΔT 60 K	Toplotni učinak 75/65/20°C ΔT 50 K	Toplotni učinak 55/45/20°C ΔT 30 K	Dimenzije priključaka G (")
750	400	330	14	4,70	3,50	491	394	212	1/2
1120	400	330	21	6,80	5,30	744	594	317	1/2
1490	400	330	28	9,20	7,00	993	793	423	1/2
1860	400	330	35	11,10	8,60	1234	983	520	1/2
750	500	430	14	5,30	4,00	588	468	248	1/2
1120	500	430	21	7,90	6,00	882	704	373	1/2
1490	500	430	28	10,40	8,00	1183	939	491	1/2
1860	500	430	35	13,00	10,00	1453	1161	620	1/2
750	600	530	14	6,00	4,60	675	539	286	1/2
1120	600	530	21	8,90	6,00	1009	808	433	1/2
1490	600	530	28	11,90	9,60	1351	1082	582	1/2
1860	600	530	35	14,70	11,50	1678	1334	701	1/2
750	700	630	14	6,80	5,00	777	619	327	1/2
1120	700	630	21	10,00	7,60	1158	922	487	1/2
1490	700	630	28	13,30	10,60	1515	1206	637	1/2
1860	700	630	35	16,50	13,00	1929	1536	811	1/2